

# A Preview of University Centre Transformation



Toronto Rehabilitation Institute  
*A University of Toronto Teaching and Research Hospital*

# Witness our transformation

We invite you to take a glimpse of the exciting multi-million dollar transformation that is underway at Toronto Rehab's University Centre. Scheduled for completion in 2012, this ambitious project includes:

- construction of a new 13-storey patient care and research wing and extensive renovations to the existing east and north wings of the hospital;
- dedicated space for education to accommodate the many students who come to Toronto Rehab to complete their clinical training; and
- the creation of iDAPT — Intelligent Design for Adaptation, Participation and Technology — a place where research and technology will combine to improve the lives of individuals recovering from, and living with, disabling injury and illness and age-related conditions.

Thank you for your involvement, support, encouragement and generosity in helping to make this transformation possible.

*“Within the walls of this facility the hopes and dreams of patients are given new life and a new opportunity. Your new building will provide your staff with the tools they need to inspire patients and allow them to embark upon a new journey.”*

— Emile DuHamel, a past patient of Toronto Rehab



David Bragg



Mark Rochon

**This is a major milestone in our progress towards establishing an internationally recognized rehabilitation, research and teaching facility.**

In anticipation of the future rehabilitation needs of Ontarians, Toronto Rehab is redeveloping and expanding its patient care, research and education facilities.

A major component of this multi-million dollar redevelopment is the transformation of our University Centre. A new 13-storey wing and renovations to the existing north and east wings will provide more appropriate environments for our specialized patient care, dedicated space to accommodate our role in education and superb facilities to house iDAPT (Intelligent Design for Adaptation, Participation and Technology), one of the most advanced rehabilitation research facilities in the world.

This ambitious project represents a major milestone in our progress towards establishing an internationally recognized rehabilitation, research and teaching facility — a facility that will enable us to push the frontiers of rehabilitation science even further, so that we can make a real difference in the lives of the **4.4 million** Canadians who live with disability.

We are delighted that the many thousands of patients who will pass through the doors of University Centre, and the staff who work here every day, will soon have outstanding facilities to support their work, their recovery and return to their communities.

The vision for this centre will be realized, in great measure, because of your commitment and generosity. Whether you are a past patient, a member of our patient care, research or education teams, a volunteer or a donor, you have helped to champion and support Toronto Rehab and its future.

We hope that you share our excitement as a long-time dream becomes an inspiring reality. Thank you for your part in making all this possible.

David Bragg  
Chair, Board of Directors

Mark Rochon  
President and CEO

# Welcome inside!

An additional new Elm Street entranceway will make access to University Centre more convenient for patients and visitors.



Architect's rendering of new Elm Street entrance

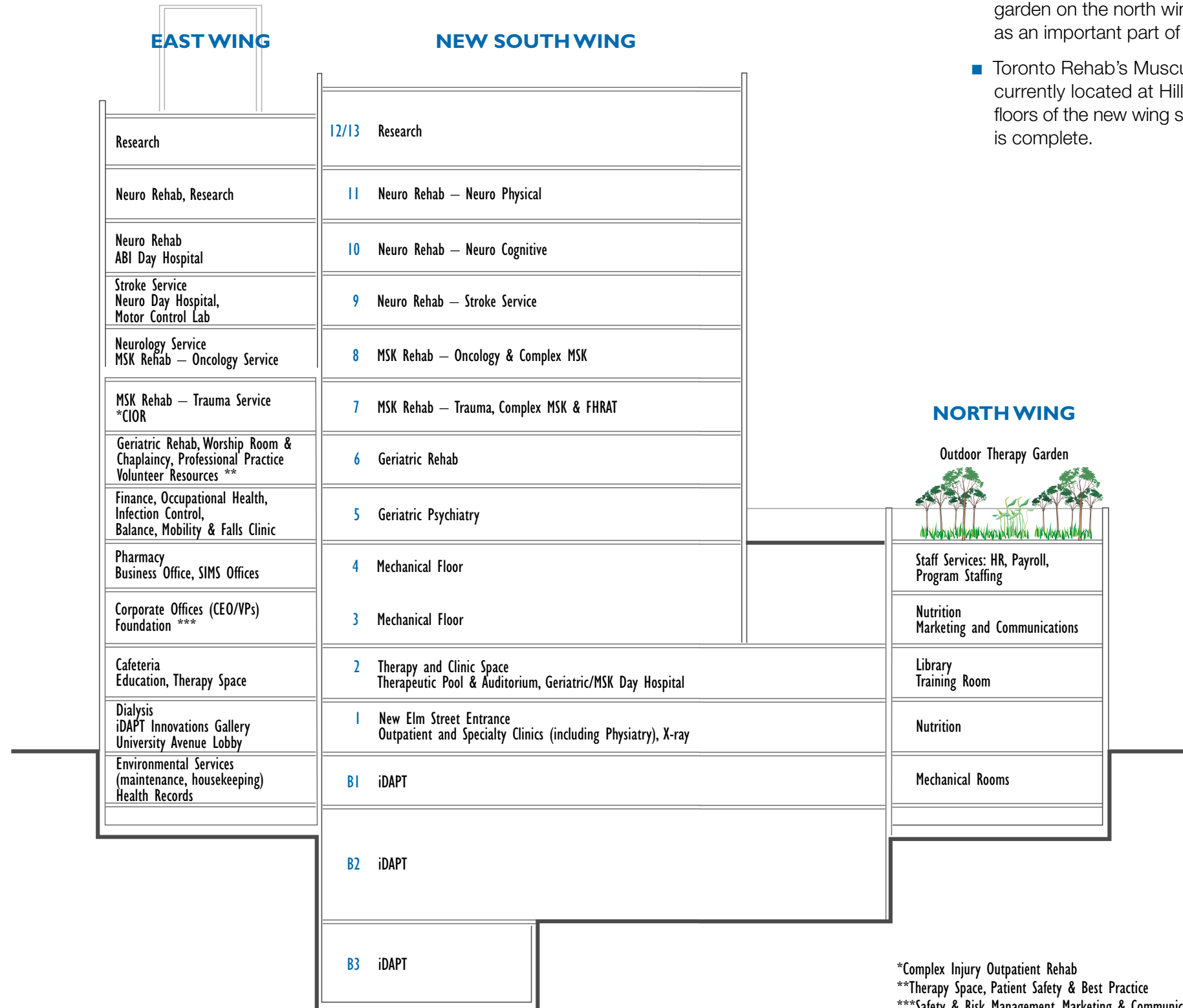
*“The new drive-through configuration will help to reduce traffic congestion and will provide an attractive, sheltered and convenient drop off and pick up location for patients and family members.”*

– Chris Pickard, Director, Capital Planning and Project Management



Overhead view of redeveloped University Centre including new entrance

# What's where



An at-a-glance overview of where major programs and services will be located when the University Centre redevelopment is complete in 2012.

- Patients with cognitive impairments will enjoy the therapeutic roof-top garden on the north wing, where they can wander and interact safely as an important part of their rehabilitation and recovery.
- Toronto Rehab's Musculoskeletal (MSK) Rehabilitation Program, currently located at Hillcrest Centre, will move into the 7th and 8th floors of the new wing shortly after the University Centre redevelopment is complete.

Geriatric rehab – for seniors with severe illnesses and/or multiple age-related conditions

MSK (Musculoskeletal) rehab – for adults who have had joint replacement surgery, sustained multiple injuries, or who have osteoporosis or cancer

Neuro rehab – for individuals who have had a stroke or brain injury, or who have multiple sclerosis

\*Complex Injury Outpatient Rehab

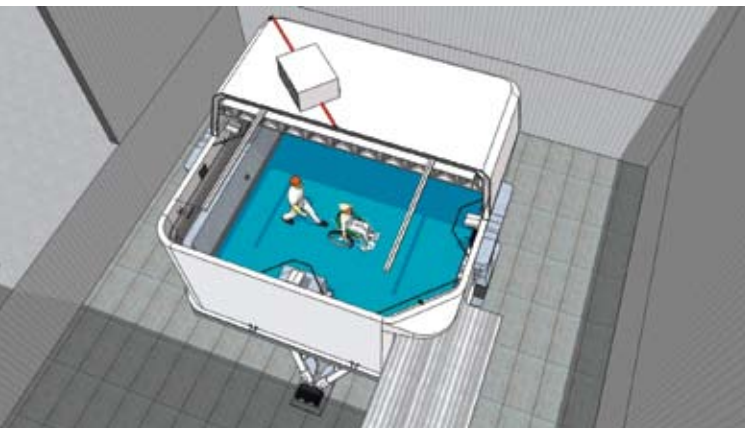
\*\*Therapy Space, Patient Safety & Best Practice

\*\*\*Safety & Risk Management, Marketing & Communications

# iDAPT: the future of rehabilitation research

*“We’re talking about the coming of age of rehabilitation research. iDAPT will help researchers translate their ideas into useable treatments, useable products and useable services as fast as possible.”*

– Dr. Geoff Fernie, Vice President, Research



*The most advanced simulator in the world will mimic challenging weather and terrain conditions so that scientists can develop and evaluate new treatments, devices or technologies.*



*The Home Environment Lab, where scientists will develop and test new assistive technologies. The objective: to make it possible for more people to continue to live in their own homes as they age.*

Toronto Rehab will soon be home to one of the world’s most advanced networks of rehabilitation research and development facilities. iDAPT (Intelligent Design for Adaptation, Participation and Technology) is a \$36-million research initiative that is bound to revolutionize rehabilitation research. When fully completed, in 2011, iDAPT will consist of 14 labs and other research spaces where scientists will produce new treatments and develop technologies and devices to:

- maximize the speed and extent of people’s recovery from injury and illness;
- help people remain in their own homes and communities as they age;
- lessen the burden on family and professional caregivers;
- increase patient safety by reducing the risk of falls and hospital-acquired infections.

## Why iDAPT?

Until now, our ability to see how adults with disabilities fare day to day has been limited by a lack of research facilities where ideas can be cultivated, tested and applied in the real world. Current assistive devices often do not function well in challenging environments or are not as user-friendly as consumers would like. For people who use walkers and wheelchairs, for example, an inch of snow can be a pile of trouble. iDAPT will provide researchers with tools to safely study the complex interactions between people and their environment, and deliver innovative and well-designed products.

## A world-first

Considered the centrepiece of iDAPT, the Challenging Environment Assessment Laboratory (CEAL) will be a subterranean research lab beneath Toronto Rehab’s University Centre. CEAL will feature the world’s first hydraulic motion simulator that can mimic everyday environmental challenges faced by older people and those with disabling illness and injury. The simulator will have different chambers that can be lifted on and off the base to generate snow and ice, different motions, slopes and terrain. Scientists will use the lab to safely and accurately measure the difficulties encountered in the real world, and to evaluate the impact of new treatments, devices or technologies developed at Toronto Rehab.

## Extraordinary research environments

iDAPT will also include labs to study sleep, stroke, mobility and biomechanics and to develop assistive technologies for the home.

Funding for iDAPT has been provided by the federal government through the Canada Foundation for Innovation, by the provincial government through the Ontario Innovation Trust and the Ontario Ministry of Research and Innovation, as well as by the Toronto Rehab Foundation, the University of Toronto and private donors.

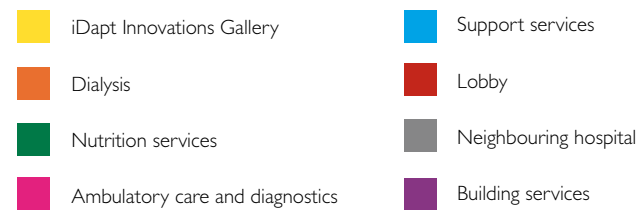
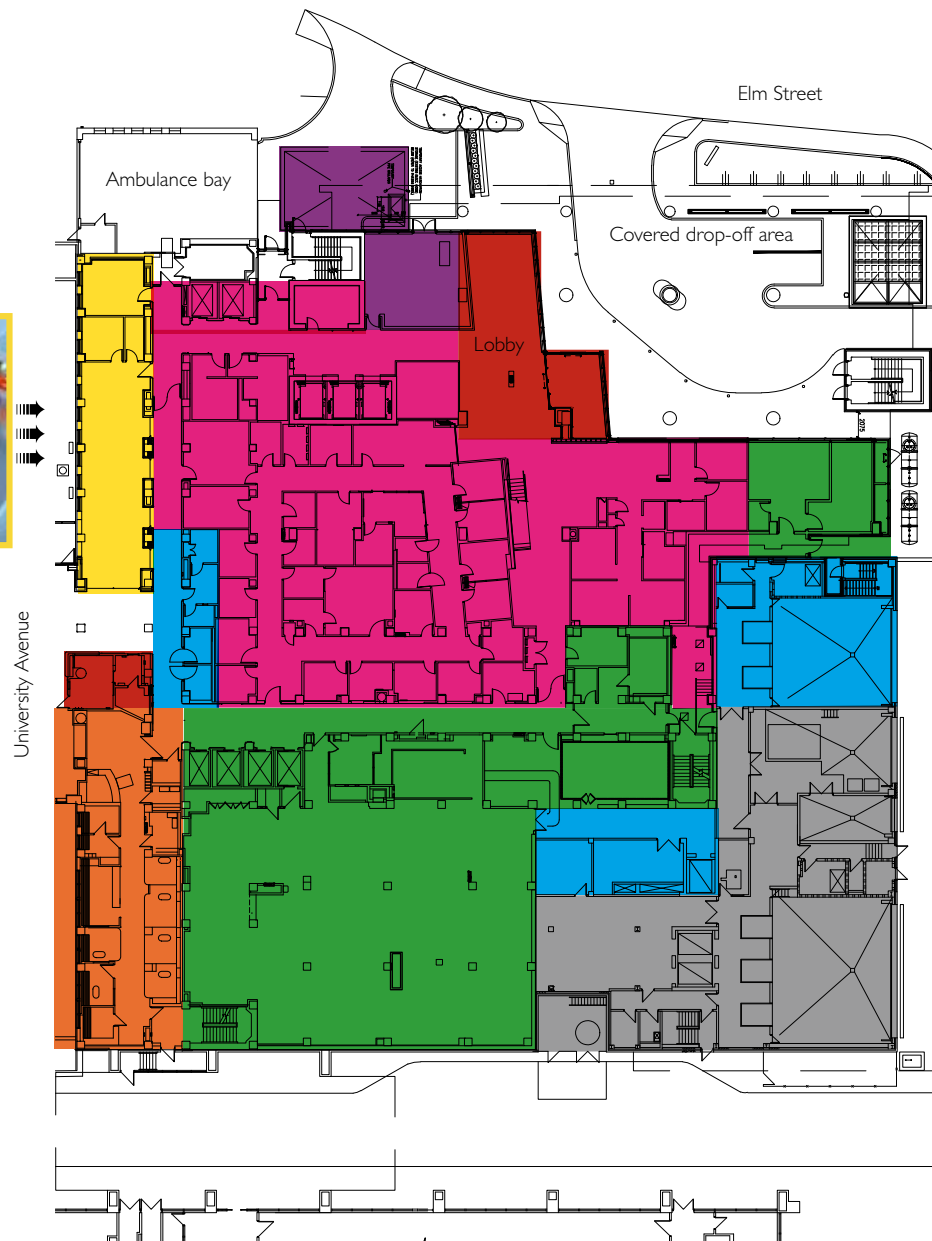
In all, iDAPT will comprise more than 60,000 square feet of research space.

# New 1st floor



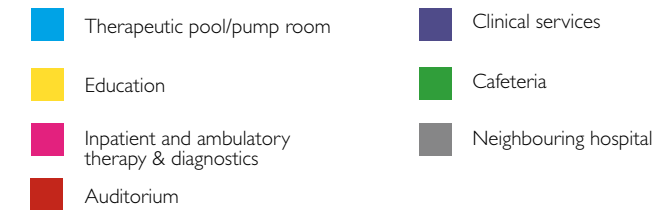
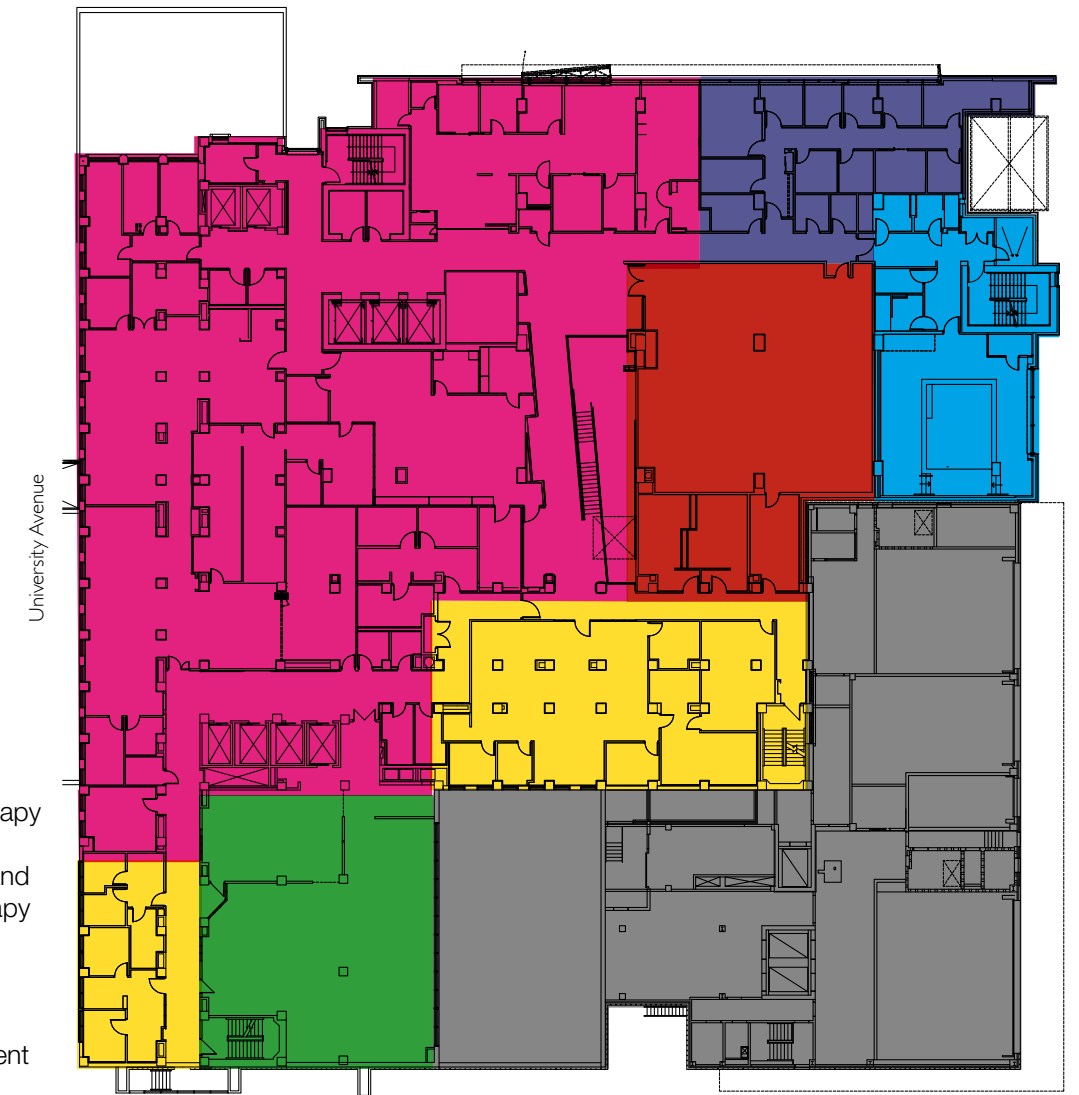
iDAPT Innovations Gallery

- Many outpatient services and clinics are located on this floor, providing easy access for patients and family members.
- A new covered vehicle driveway on the south (Elm Street) side of the new wing (see pages 12 and 13) provides a convenient drop-off and pick-up area.
- The iDAPT Innovations Gallery (which extends into the existing east wing). Open to the public, the Gallery will showcase the prototypes and products developed by iDAPT researchers.



# New 2nd floor

- Shared therapy space to house additional specialized therapy equipment for both inpatient and outpatient therapy (e.g. a drive simulator).
- An auditorium for public, student and continuing professional education.
- A therapeutic pool.
- The Geriatric and MSK Day Hospital are located directly across from the elevators for easy patient access.



# A typical inpatient floor

*“Attention to patient comfort, safety and infection control means that patients will enjoy better, more pleasant rooms and therapy spaces where their rehabilitation needs can be properly addressed.”*

– Karima Velji, Vice President, Patient Care and Chief Nursing Executive



New hand washing facilities

Patient room

## Features:

- Spacious, accessible rooms and wide hallways allow patients and staff to move around easily.
- Large windows and pleasant décor make the environment bright and comfortable.
- Inpatient accommodation comprises mostly private rooms, but four-bed rooms are also designed with privacy in mind.
- Patient bathrooms are fully accessible. Each patient room has hand washing facilities.
- Medical gas connections are installed close to every patient's bedside.
- Each inpatient floor has a well-equipped isolation room.
- On-unit therapy space allows therapists to work more closely with patients and enables nursing and therapy professionals to work more collaboratively.
- Each inpatient floor has a comfortable lounge area for patients and visitors and a well-appointed dining room which doubles as an activity room.
- Most floors have laundry facilities for patient use.



# Help patients meet the challenges of a lifetime

Through your support of patient care, research and education, you can help ensure that the amazing work and care continues inside the new walls of Toronto Rehab's University Centre.

Find out how you can make a difference. Visit the Foundation's website at [www.torontorehabfoundation.com](http://www.torontorehabfoundation.com) or call 416-597-3040. **Thank you.**



*New south wing viewed from corner of Murray and Elm Streets*



Toronto Rehab  
Foundation



Tim Casgrain



Sheila Hicks

## *Donor support is more critical than ever*

The walls of a brand new wing will soon be in place at University Centre and donor support at all levels will be critical to help ensure that Toronto Rehab's amazing work and care continues. Through your support of patient care, research and education, together we can help this already renowned facility become the leader in rehabilitation science.

To catapult Toronto Rehab forward, we are raising funds to do even more research to advance rehabilitation and enhance people's lives as they face the challenges of disabilities and as they age.

## *Your gift will help Toronto Rehab patients meet the challenges of a lifetime by:*

- purchasing new assistive devices, exercise equipment and other medical and recreational equipment used in therapy — often not funded through government sources or not available when needed;
- creating more home-like environments and providing entertainment, recreational and leisure activities and outings for patients whose stay can vary from several weeks to months and sometimes even years;
- ensuring that patients have the necessary support when transitioning from our hospital to their homes or to other facilities in the community;
- equipping research facilities and supporting research into new and more effective treatment interventions and assistive devices that will speed recovery and enhance people's quality of life by increasing their functional abilities and independence;
- producing educational materials and programming for patients, families, clinicians and students.

For specific examples of critical needs for Toronto Rehab's program clinicians, researchers and educators, please visit our website at [www.torontorehabfoundation.com](http://www.torontorehabfoundation.com).

*Please consider making a donation today.*

Tim Casgrain  
Chair, Toronto Rehab Foundation

Sheila Hicks  
President, Toronto Rehab Foundation



Toronto Rehab  
550 University Avenue  
Toronto, ON M5G 2A2  
416-597-3422, ext. 3425  
[www.torontorehab.com](http://www.torontorehab.com)

Toronto Rehab's University Centre redevelopment is being funded by Toronto Rehab, the Toronto Rehab Foundation and the province's ReNew Ontario plan, as well as through federal and provincial infrastructure research grants (iDAPT).