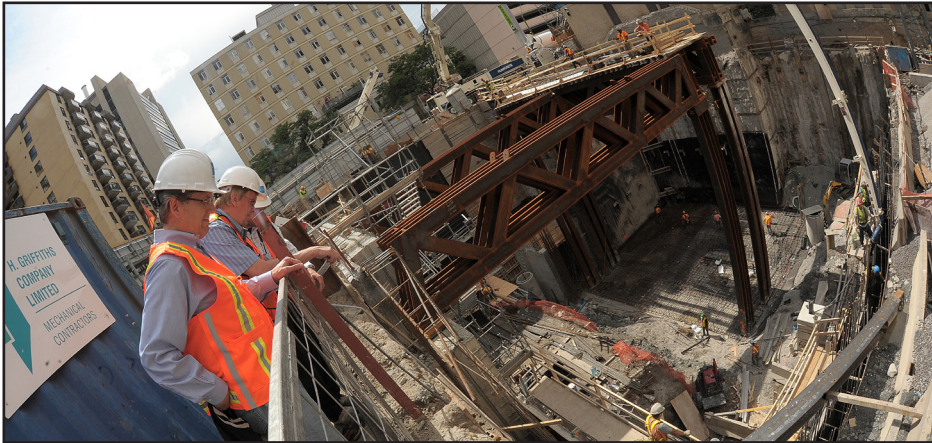


A Preview of What's to Come

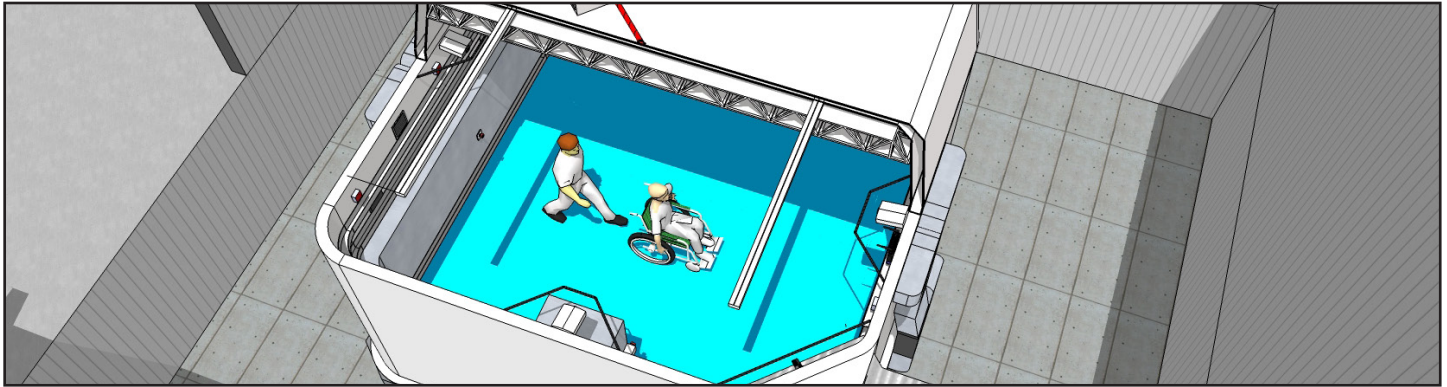


Before the ground floor slab was poured for the new wing at Toronto Rehab's University Centre, Mark Rochon, President and CEO and Geoff Fernie, VP, Research peered into the 60-foot-deep pit that will be the future home of the Challenging

New wing begins to take shape



After months of excavation work the new University Centre 13-storey patient care and research wing is quickly moving upwards. Massive columns and trusses have



A preview of the Challenging Environment Assessment Laboratory (CEAL), that will be located in the new wing at University Centre. CEAL will feature the world's first motion simulator that can mimic everyday environmental conditions, such as snow and ice, which challenge older people and those with disabling injury or illness. For more information on rehabilitation research at Toronto Rehab go to: www.torontorehab.on.ca/research.

Manuel's "View from the Top"

It's 6:30 a.m. and Manuel Fernandez* is setting out on the final, 30-minute leg of his daily commute – a 212-foot vertical climb to a tower crane cab overlooking Toronto Rehab's new wing construction site at University Centre.

Manuel was 15 years old when he got his first job erecting and later operating

mounted boom to lower or raise a hook attached to a 'load line'. The crane can turn 360 degrees and lift and move almost any construction material or piece of equipment on site. A designated "swamper", stationed on the ground, directs Manuel with hand or radio signals, depending on weather conditions and visibility.

explains, adjusting the movement of the boom and load line to keep loads on target.

Every job has its challenges, and Manuel's is no exception. The lengthy return trip means that he usually stays in his crane cab all day. If he forgets something, a piece of rope, a bucket and a ground-level helper can usually help him out. "This